

# CHR-EC

Heat Recovery

Units

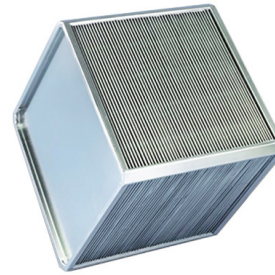


confidence  
air

# Components

## ▶ Heat Recovery Exchanger

- Longlife,plate type heat recovery exchanger
- High thermal efficiency
- Low pressure drop
- Eurovent certified
- Detachable, easy maintenance
- Washable



## ▶ EC Fan

### Control Boards

- Fans with EC motor are used in CHR-EC units EC motors have higher efficiencies than AC motors, and have easy speed control.
- Fan blades are backward curved type which have high aero-dynamic efficiency .
- EC motors have low SFP figures which let CHR-EC units consume less energy and have higher efficiencies .



## ▶ Filters

- G class according to EN 779
- Cleanable
- Leakproof sledge design
- Easy service with side and down service covers



## ▶ Body of the Unit

- High Corrosion resistant sheet metal painted
- Easy maintenance with service doors
- Easy service
- Flame retardant thermal and sound isolation
- Easy mounting with hangers

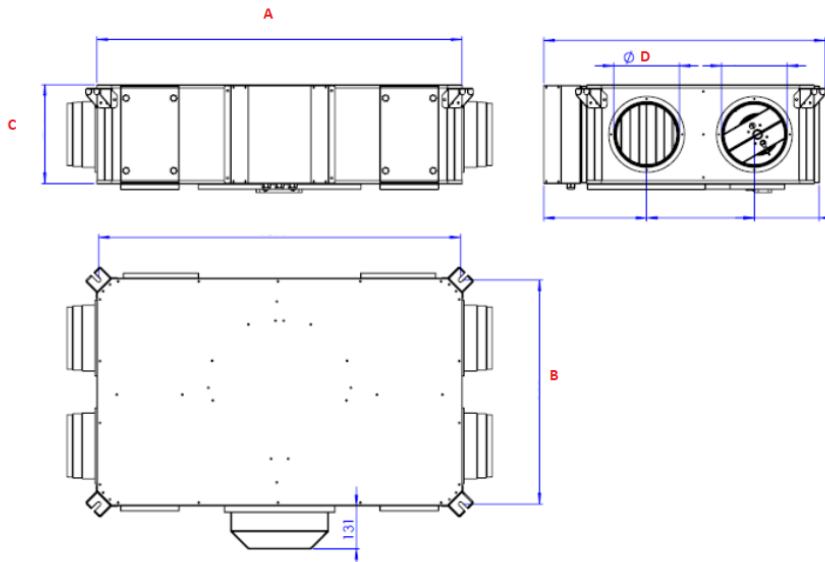
# Performance Datas

		CHR-EC						
		500	1000	1500	2400	3000	4000	5000
Electrical Connections		1~230 V 50 Hz						
Performance Datas								
Air Flow <sup>(1)</sup>	m <sup>3</sup> /h	550	1000	1500	2400	3000	4000	5000
Sound Level <sup>(2)</sup>	dB (A)	44	45	46	48	49	50	52
Electrical Requirements								
Fan/motor Power <sup>(3)</sup>	W	240	310	420	450	750	960	1360
Maximum Current	(A)	0,9	1,36	1,8	2	3,5	4,8	6

<sup>1</sup> Airflow data when the ESP is 0 Pa.

<sup>2</sup> Sound levels are measured at 250Hz and at 1,5m distance.

<sup>3</sup> Power consumption



		Dimensions (mm)				
CHR-EC	MODEL	A	B	C	D	Weight (kg)
	500	680	1110	300	200	51
	1000	842	1260	375	250	52
	1500	842	1260	427	250	72
	2400	1040	1640	500	315	84
	3000	1140	1840	545	355	116
	4000	1190	2060	610	355	125
	5000	1190	2140	645	450	186